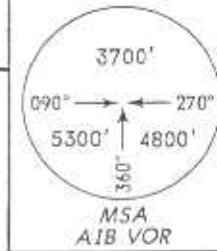


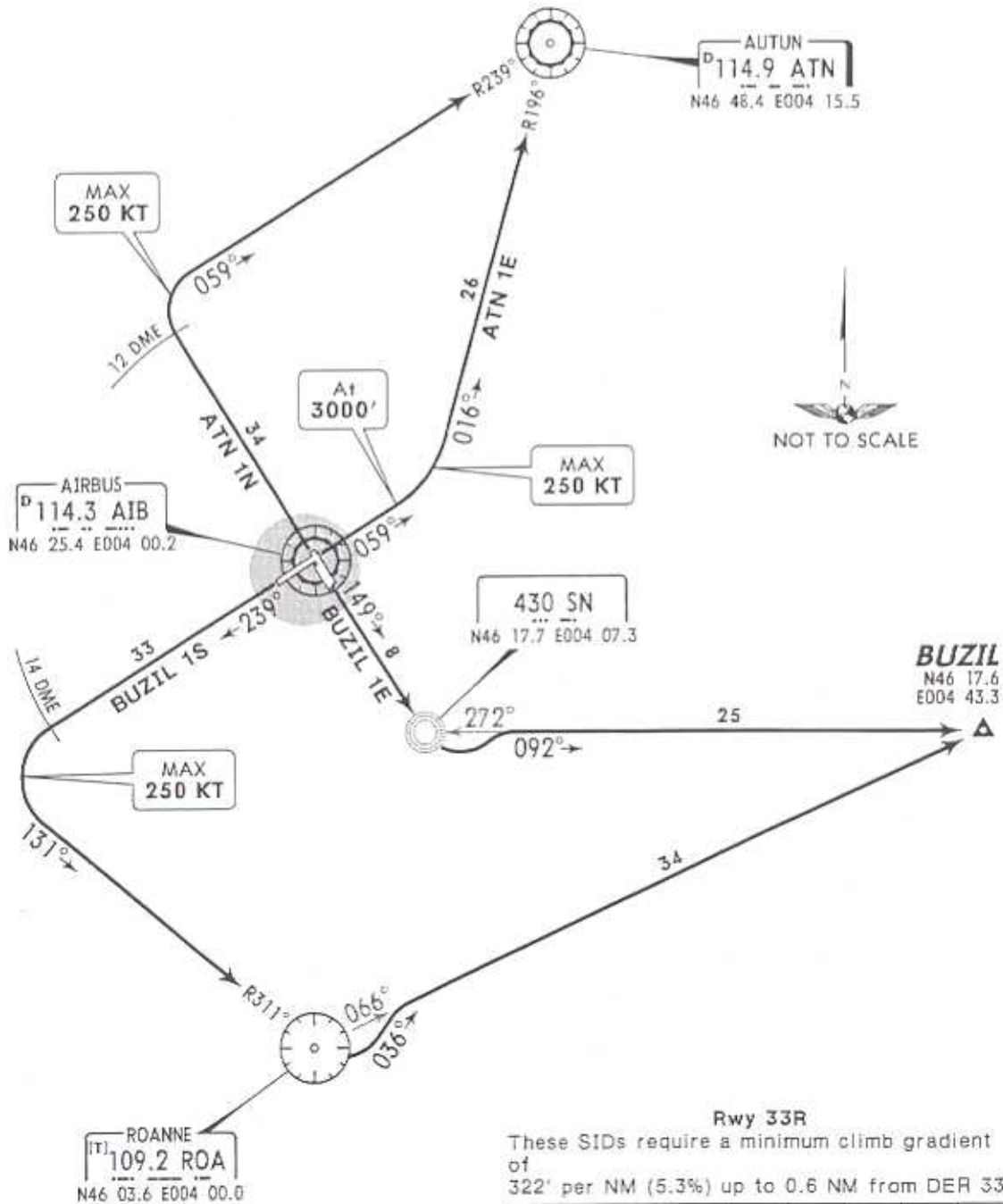
Apt Elev
820'

Trans level: By ATC Trans alt: 5000'



ATN 1E, ATN 1N, BUZIL 1E, BUZIL 1S
RWYS 06, 07, 33L/R, 15L/R, 24 DEPARTURES

FICTITIOUS DATA
NOT FOR NAVIGATIONAL USE



Rwy 33R
These SIDs require a minimum climb gradient of 322' per NM (5.3%) up to 0.6 NM from DER 33R.

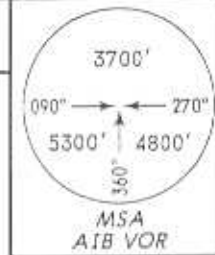
Gnd speed-KT	75	100	150	200	250	300
322' per NM	403	537	805	1073	1342	1610

Initial climb clearance **FL70**, further climb when authorized by ATC

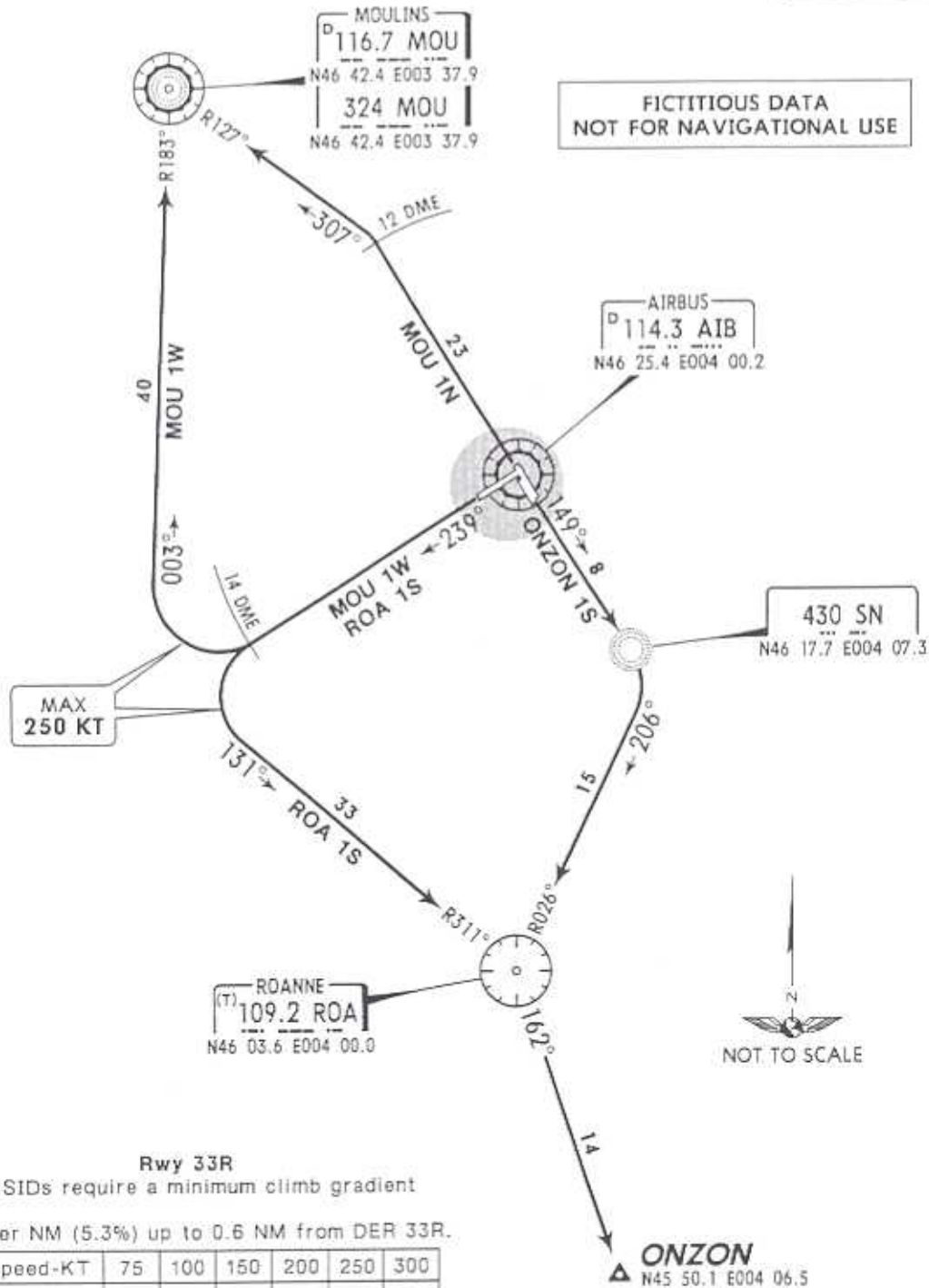
SID	RWY	ROUTING
ATN 1E	06, 07	Climb to 3000', turn LEFT, intercept ATN R-196 inbound to ATN.
ATN 1N	33L/R	To AIB 12 DME, turn RIGHT, intercept ATN R-239 inbound to ATN.
BUZIL 1E	15L/R	To SN, turn LEFT, 092° bearing to BUZIL.
BUZIL 1S	24	To AIB 14 DME, turn LEFT, intercept ROA R-311 inbound to ROA, then to BUZIL.

Apt Elev
820'

Trans level: By ATC Trans alt: 5000'



MOU 1N, MOU 1W, ONZON 1S, ROA 1S
RWYS 33L/R, 24, 15L/R DEPARTURES



FICTITIOUS DATA
NOT FOR NAVIGATIONAL USE



Rwy 33R

These SIDs require a minimum climb gradient of 322' per NM (5.3%) up to 0.6 NM from DER 33R.

Gnd speed-KT	75	100	150	200	250	300
322' per NM	403	537	805	1073	1342	1610

Initial climb clearance FL70, further climb when authorized by ATC

SID	RWY	ROUTING
MOU 1N	33L/R	To AIB 12 DME, turn LEFT, intercept MOU R-127 inbound to MOU.
MOU 1W	24	To AIB 14 DME, turn RIGHT, intercept MOU R-183 inbound to MOU.
ONZON 1S	15L/R	To SN, turn RIGHT, intercept ROA R-026 inbound to ROA, then to ONZON.
ROA 1S	24	To AIB 14 DME, turn LEFT, intercept ROA R-311 inbound to ROA, then to ONZON.